

Diary Dates

Sun, 13 Tamworth City Worship with Rev Chris Wright. Sunday School. Morning Tea.

11:30am Korean Reborn

Mon, 14 4-5am Wheely Bean JH M-F

9am-12:30pm One Door

Mental Health in St A Rm

9:30-3pm Kairos Sewing JH

10am-4pm Op Shop M-F

1:30pm KYB 26 Upper St

4pm WW in Dunn Hall

5:30pm Dance in Jubilee H

Tue, 15 9am-2pm Office Tue-Fri

9am AI Retirees in St A Rm

10am-1pm Pres Bkeeper

Elder Nominations Close

2pm Senior's Getting

Together Fellowship at St

Andrew's Village Hall

5-8pm WW in Dunn Hall

Wed, 16 9am Op Shop Sorting

10am Op Shop Morning Tea

in St Andrew's Room

6-9:30pm New Vogue in JH

Thu, 17 8:30am Prayer Group in Wesley Room

9:30am Yoga in Dunn H

4:30pm Worship Music

Fri, 18 8:30am WW in Dunn Hall

10am Craft Group in St

Andrew's Room

Sat, 19 8-11am WW in Dunn Hall

9am-12noon Op Shop

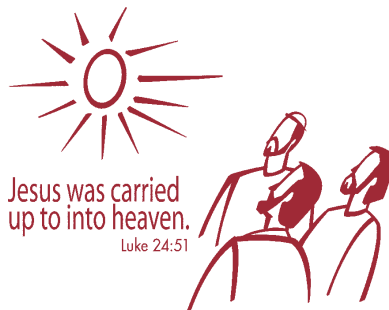
2pm Friends of Nioka

Remembrance Service at

Tamworth City UC

Sun, 20 Tamworth City Worship with Rev Chris Wright. Sunday School. Morning Tea.

11am West Tamworth



Preaching Plan

Sunday, 20 May—Pentecost Sunday

9am Tamworth City with Rev Chris Wright E: A Ashworth, D: F Kerr, R & P Pryor, O: R Cathcart, PP J Carthew

9:30am Tamworth Southside

11am West Tamworth—Rev Chris Wright. Trading Table.

5pm Tamworth Southside



Contact Details:

- **Minister:** Rev Chris Wright Ph 0427 633 657 Email chris@thewrights.com.au
- **Office:** 144 Marius St, PO Box 501, Tamworth 2340 Ph 02 6766 5311 Fx 02 6766 4390 Email tamworthcity.uca@gmail.com Hrs 9am-2pm Tue-Fri

Other Useful Local

Contacts:

- **Southside Office:** Ph/Fx 6765 3714 PO Box 5101, South Tamworth 2340 Email tsuoffice@aanet.com.au
- **Southside Lay Ministry Worker:** Suzanne Holloway 0438 608 373
- **Young Family Worker:** Sarah Wright 0423 617 813 Email: sarah.familyworker.uca@gmail.com
- **Peel Valley:** Margaret Crowell Mb 0408 660 025
- **UNITING St Andrew's Village** 1800 864 846 Chaplain Rev Henry Swindon 0466 445 632
- **UNITING Rainbow Cottage** 6766 7655 Sharn Mason

Welcome to Tamworth City Uniting Church

We welcome all those worshipping with us today. Rev Chris Wright will be leading Worship. Please stay for a chat and morning tea afterwards.



Easter Reflection

Seasons of the Spirit—Love Leads the Way

Scriptures: Acts 1:15-17, 21-26; Psalm 1; 1 John 5:9-13; John 17:6-19

Prayer

God of enduring promise, you know our hearts and minds. Fill us with your thoughts and right action according to your design. Help us to be loving and kind. We know that you speak to us, and we listen for your wisdom now and in the days to come. Amen.

Introduction

We continue to practice following the way of Christ as believers in community with one another. We have tradition and holy scripture as resources. The early church learned to discern God's will, following Jesus' teachings and interpretation of scripture. The church continues to become the church, following the way of Christ.

Focus

There were twelve tribes of Israel and twelve disciples. It is no wonder that in **Acts 1:15–17, 21–26**, following the death of Judas, that the remaining disciples and the other followers of Jesus were eager to restore the number of what was probably the inner circle of Jesus' followers to twelve. The twelve tribes represented the diversity and strength of the people chosen by God to be the demonstration of God's justice and mercy to the world. The twelve disciples also represent the diversity and strength of those invited into God's new realm (see Luke 5 and 6:12–17). This story reminds the early church that they are not stepping outside of the culture of which they are a part. At this point, the overwhelming majority of the new church would have been Jews. By restoring the twelve, these early believers were reminding themselves that their project was to work out what it meant to follow the risen Christ within the context of their culture, and not to try to separate themselves from it.

As the first church lived out of its culture or its roots, **Psalm 1** might well have been in their mind. The image of a tree planted by the water is an image of consistency. A tree planted by a watercourse never suffers the

Southside Scene

Worship: 9:30am & 5pm Sundays.
HC 3rd Sunday.

Ladies Breakfast: 7:30am on 4th
Tuesday each month.

Prayer Meeting: 3:30pm Tuesdays.

Worship Planning: 5:30pm Tuesdays.

Faith Art Group: 1pm Thursdays,
alternate weeks, school terms.

Men's Choir: 5:30pm on Thursdays.

Men's Breakfast: 7:30am on 1st
Saturday each month.

www.tamworthsouthside.org.au or

Facebook: Tamworth Southside Uniting
Church

Our Vision: *To be a faithful & enthusiastic
part of God's church in our community,
sharing the love of Jesus.*

Mission Statements: *To build up individuals
and teams, empowered by the Holy Spirit,
using our spiritual gifts to serve each other
and our community.*



Peel Valley Congregations

Fri, 11 May—Hallsville No Church.

Sun, 13 May—8:30am Gowrie Service
and 11am West Tamworth HC
Service

Tue, 15 May—10am Memory Lane at
Wet Tamworth

Thu, 17 May—2:30pm Monthly Study
Group at West Tamworth

Fri, 18 May—5:30pm Hallsville Friday
Family Church.

Sun, 20 May—8:30am Gowrie
Service. 11am West Tamworth
Service with Rev Chris Wright.
Trading Table.

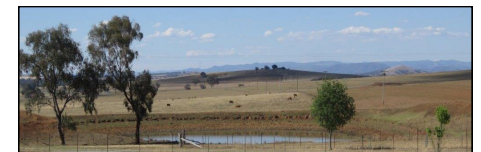
Fri, 25 May—5:30pm Hallsville Friday
Family Church

Sun, 27 May—8am Hallsville
Markets; 8:30am Gowrie Service &
11am West Tamworth Service

GOWRIE, HALLSVILLE & WEST TAMWORTH CONGREGATIONS

*Our Goal "To be transformed communities,
experiencing, enjoying & sharing the gift of
the friendship of Jesus."*

Mission "Called to be Free, Gifted to Serve"
Pastoral Care: Meg Mangan 0466 337



Today's Information

Worship on Sunday, 13 May 2018—7th Sunday in Easter (Ascension Sunday)

Worship service with Rev Chris Wright at 9am. Sunday School. Morning Tea.
Elder: R Duns, Door: M Duns, J Carthew, R Barclay, AV: J Phillips, Org: R Richardson.

Korean Reborn Church

11:30am Sundays for worship and then the Jubilee Kitchen for lunch.

Fete Results

Wow! Well done everyone. Preliminary results: BBQ \$295.25; Bric-a-brac \$429.65; Cakes (our share) \$76; Collectables/Jewellery \$417.05; Antiques \$1,383.70; Craft \$462.05; Flowers \$241.90; Garden \$709.30; Jams, Condiments, Biscuits, Sweets \$1,351.50; Produce \$221.50; Morning Tea \$394.80; Desserts \$498; plus extra donations this week \$200.

TOTAL: \$6,680.70. Thank you.

This Week's Events

One Door Mental Health

Meeting in the St Andrew's Room on Monday, 14, 21 & 28 May 9am-12:30p

Opportunity Shop

Our Opportunity Shop is located at 24 Darling Street. Normal hours 10am-4pm Mondays to Fridays and 9am-12noon on Saturdays. Contact Lorraine (0401 762 463) or Judy (0418 662 081).

KYB Study Group

Our KYB Study Group meet at 1:30pm on Mondays in the home of Paul & Lorraine Turner, 26 Upper St. Contact 6766 6891. All welcome.

Church Office

Regular house 9am-2pm Tuesdays to Fridays. All hall bookings through the office please. Thank you, Nicolette.

Hospital Visit

Are you scheduled to go into hospital? If so, you need to let us know if you want visitors (your Pastoral Partner, an Elder, or the Office). The current system at the Hospitals does not allow us access to this information easily.

Screening Mammogram

Breast Screen NSW Hunter New England offers all women aged 50-90yrs a free Screening Mammogram for the early detection of breast cancer. Call 132050.

Key Audit

We are doing an audit of keys to the buildings here at Tamworth City. Please check with the office about your need for keys to buildings. Take the opportunity to return a key you don't need any longer.

Library

We have a library of books/DVDs in the Vestry. Do you have any you no longer require of a religious nature to donate to our Library? Maybe you'd like to borrow a book. Talk to Peter Battle 6766 7455.

Stamp Collecting News

Keep in mind that the stamps you receive today, our customers are anxious to buy tomorrow at the Synod Stamp Committee sales. Keep them coming in. Leave them at the church office for trimming and sorting.

Transport to Church

Can you help with transport to church? Maybe you've got a spare seat and can pick someone up from nearby on your way. Contact the office on 6766 5311.

Kairos Outside Sewing Group

Kairos Outside Sewing Group will be meeting in the Jubilee Hall on Monday mornings from 9:30am-3pm each week during school terms.

Wheelchair/Walker

There is a wheelchair and a walker available in the Vestry to assist in transporting those who require one to and from the church carpark. Please return to the Vestry.

Food Hamper Sunday

Food Hamper Sunday is the 1st Sunday of the month. Bring along something to the office anytime. A shopping list might look like this: 2x1lt UHT milk, 500g sugar, 25 tea bag box, 50g coffee, 100gm tuna/sardines, 2xcuppa coup, 2xrice/pasta pack, 250g biscuits, tin baked beans/spaghetti (ring pull), tin steak & veg (or similar), 2minute noodles, small tinned fruit, small cereal. Thank you everyone.

Prayers

Prayer Focus—Tamworth City

Today we focus on the activities of the Worship, Evangelism, Property, and Finance & Admin committees. Please uphold these in your private prayers during the week.

Ecumenical Prayer Calendar

Keep the people of Bangladesh, Bhutan and Nepal in your prayers this week.

Prayer Diary—Tamworth Churches

We keep the activities of the St Paul's Anglican Church, Harvest Church, Liberty Church, Calrossy School, St Peter's Anglican Church, St Stephen's Presbyterian Church and the NorthWest Church in our prayers.

Presbytery Prayer Points

We continue to pray for steady rain across our Presbytery. Give thanks for time shared together at our meeting yesterday.

Scripture in Schools

Special thanks for those who are preparing to lead classes in our high schools this year. As usual funding is solely from donations. If you would like to contribute: A/c name TSCEAI, BSB 032 621, A/c No. 372 372. Thank you.

Prayer Chain

If you have a concern that you would particularly like prayer support for, please contact Judith Archbold 6766 6716 or Ted Woodhart 6766 1804.

Maintenance Items

Sunday Trading Table

Our bring-and-buy table is selling anything from handiwork to cooking, produce to jams. Stop and buy something this week and donate something another week. After church with the morning tea in the St Andrew's Room.



Association of Independent Retirees

Meeting in the St Andrew's Room on Tuesday, 15 May 9am-12noon.

Elder Nominations Close

Tuesday, 15 May.

Senior's Getting Together Fellowship

Meeting in the St Andrew's Village Hall on Tuesday, 15 May 2pm.

Op Shop Working Bee

Sorting each Wednesday in the Vestry. Lots of chit-chat with your hard work and then a cuppa! All helpers welcome.

Op Shop Volunteer's Morning Tea

Meeting in the St Andrew's Room on Wednesday, 16 May from 10am.

Prayer Group

Meeting on Thursday mornings from 8:30am in the Wesley Room.

Occasional Choir

All singers are welcome to join us to practice a piece for Sunday, 27 May. We will practice on Thursdays, 17 and 24 May from 4:30pm in Church.

Craft Group

Our craft group meet on the 1st and 3rd Friday morning of the month at 10am in the St Andrew's Room. Bring along some craft, have a chat and a cuppa. Our next get-together will be on Friday, 18 May.

Friends of Nioka—Remembrance Service

Saturday, 19 May at 2pm. All are welcome to attend. Afternoon tea will follow in the St Andrew's Room.

Worship on Sunday, 20 May 2018—Pentecost Sunday

Worship service with Rev Chris Wright at 9am. Please wear something red. Sunday School. Morning Tea. Elder: A Ashworth, Door: F Kerr, R & P Pryor, AV: J Carthew, Org: R Cathcart.

11am West Tamworth Service—Rev Chris Wright.

Next Week & Beyond

UNITING St Andrew's Village Garage Sale

Keep the date free and come a join us on Saturday, 26 May from 8am to 4pm. Something for everyone—glassware, kitchenware, etc. You name it!! Contact President, Gordon Spencer, for details on 6766 6714.

Worship on Sunday, 27 May 2018—Trinity Sunday

Worship service with Rev Chris Wright at 9am. Sunday School. Morning Tea. Elder: M Weick, Door: J Shottek, H Fergus, W Standen, AV: J McClelland, Org: R Richardson.

MSSC Planning Meeting

Meeting at Tamworth Southside on Thursday, 31 May from 9:30am. Pathways presenters, Rev Kath Merrifield and Melanie Dicks will be in attendance to help workshop.

Young Families Worker Meeting

Meeting in the St Andrew's Room from 4pm on Thursday, 31 May.

Craft Group

Our craft group meet on the 1st and 3rd Friday morning of the month at 10am in the St Andrew's Room. Bring along some craft, have a chat and a cuppa. Our next get-together will be on Friday, 1 June.

Lunch & DVD

Monthly Lunch & DVD will be held on Friday, 1 June from 12noon in the St Andrew's Room. Gold coin donation for lunch. Stay and enjoy a DVD together. Contact Jim & Lorraine Furze 6761 7371.

Kairos Outside

Meeting and Reunion on Saturday, 2 June from 9am for meeting in the St Andrew's Room.



Worship on Sunday, 3 June

Worship service and Holy Communion with Rev Chris Wright at 9am. Sunday School. Morning Tea. Elder: E Sheppard, R Duns, M Duns, J Carthew, P Battle, Door: C Sheppard, S Perkins, E Gevert, AV: A Winter, Org: R Greer.

Congregational Meeting

A congregation meeting has been called for the purpose of election of elders following worship on Sunday, 3 June.

Commissioning of Young Families Worker

Everyone is invited to the Commission service for our new Young Families Worker, Sarah Wright. The service will be held at Tamworth Southside from 2pm on Sunday, 3 June. Afternoon tea will follow. An exciting new venture with Tamworth City and Tamworth Southside Congregations joining together in this new area of mission.

Catherine Hamlyn Movie Afternoon

You are invited to come to the Forum 6 Cinemas from 2:30pm for a fund raising afternoon watching the movie "I Can Only Imagine." Afternoon tea and a speaker. Tickets from Forum 6 \$16.50 each.

Diary Dates

- 4pm 6 June—Worship Committee
- 10am 8 June—Senior Communion with Rev Mark Armstrong
- Mon 11 June—Queen's Birthday Public Holiday
- 12-15 July—Emmaus Walks at PLC Armidale
- 6 September—Adult Fellowship Rally at Tamworth City
- 20 October—Makes You Wonder—Sharing Our Faith Workshop

Book of Timothy

